



Snap Creator – Creating Windows Services

Keith Tenzer
November 2010

TABLE OF CONTENTS

Table of Contents

1	INTRODUCTION	3
2	SNAP CREATOR AGENT	4
3	SNAP CREATOR SERVER	5
4	CONCLUSION.....	6

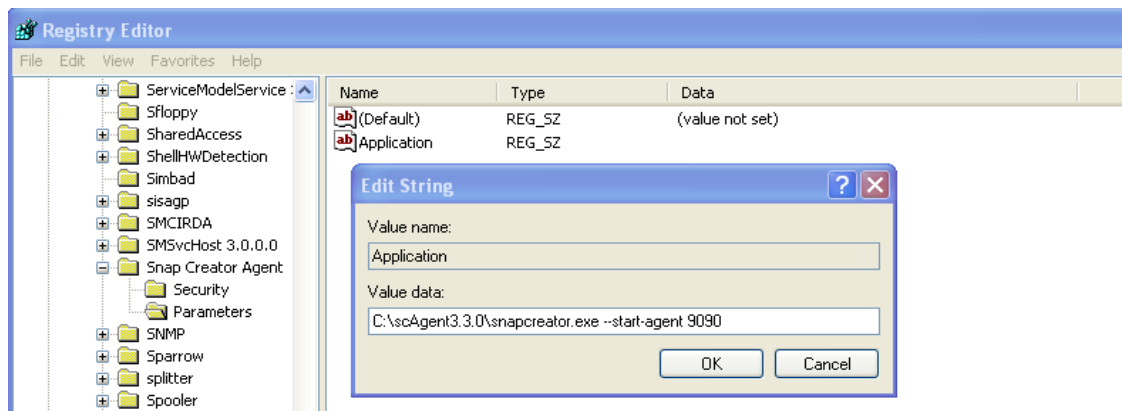
1 INTRODUCTION

In a windows environment, daemons are typically controlled by services. You can configure a service to start automatically or manually. You can also start, stop, or restart the service. Snap Creator can take advantage of a service for both the agent and server. This simplifies administration in a windows environment. Since Snap Creator does not out-of-the-box provide windows services for these two components, the Windows Resource Kit is required. The information in this document is referenced in the following Microsoft KB article: <http://support.microsoft.com/kb/137890>.

2 SNAP CREATOR AGENT

The Snap Creator agent is a lightweight daemon responsible for handling application or pre/post operations remotely. Follow the following steps to create a windows service for the Snap Creator agent:

- Install the Windows Resource Toolkit
<http://www.microsoft.com/downloads/en/details.aspx?FamilyID=9d467a69-57ff-4ae7-96ee-b18c4790cffd&displaylang=en>
- Run the instsrv command to create service
instsrv "Snap Creator Agent" "c:\Program Files\Windows Resource Kits\Tools\srvary.exe"
- Open registry and add a new key called "Parameters" under HKEY_LOCAL_MACHINE\SYSTEM\Services\Snap Creator Agent
- Under the newly added parameters key add a new string value type REG_SZ called "Application". Modify the new Application string value and add the path to start the Snap Creator agent "C:\scAgent3.3.0\snapcreator.exe --start-agent 9090".



- Start the Snap Creator Agent service



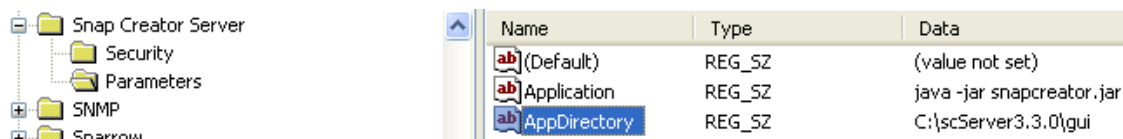
Note: To remove Snap Creator server service run the following command:

```
instsrv "Snap Creator Agent" remove
```

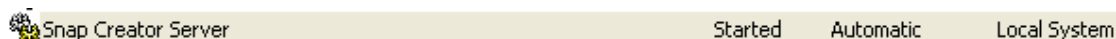
3 SNAP CREATOR SERVER

The Snap Creator server runs the GUI and backend derby database. It is not required but using the GUI adds a lot of value around managing Snap Creator configurations. Follow the following steps to create a windows service for the Snap Creator server:

- Install Windows Resource Toolkit
<http://www.microsoft.com/downloads/en/details.aspx?FamilyID=9d467a69-57ff-4ae7-96ee-b18c4790cffd&displaylang=en>
- Run the instsrv command to create service
instsrv "Snap Creator Server" "c:\Program Files\Windows Resource Kits\Tools\srvcntrl.exe"
- Open registry and add a new key called "Parameters" under
HKEY_LOCAL_MACHINE\SYSTEM\Services\Snap Creator Server
- Under the newly added parameters key add a new string value type REG_SZ called "Application". Modify the new Application string value and add the path to start the Snap Creator server "java -jar snapcreator.jar".
- Under the newly added parameters key add a new string value type REG_SZ called "AppDirectory". Modify the new AppDirectory string value and add the path to where the snapcreator.jar file is located "C:\scServer3.3.0\gui".



- Start the Snap Creator Server service



Note: To remove Snap Creator server service run the following command:

```
instsrv "Snap Creator Server" remove
```

4 CONCLUSION

Using the Windows Resource Kit we can create services for both the Snap Creator agent and server. Creating services has a lot of advantages in a windows environment. A service can be managed both locally or even remotely. This is an alternate way to configure Snap Creator agent and server. The other option is to use the Windows task scheduler.



© 2010 NetApp. All rights reserved. Specifications are subject to change without notice. NetApp, the NetApp logo, Go further, faster, are trademarks or registered trademarks of NetApp, Inc. in the United States and/or other countries.