



Joint Solution > Data Protection

## Manage Unstructured Data Growth with Symantec Data Insight on FlexPod

### THE CHALLENGE

The amount of capacity shipped to support file-based storage is expected to grow at a compound annual growth rate of 60.1% from 2008 through 2013<sup>1</sup>. The avalanche of incoming file data overwhelms an organization's ability to manage and protect the data given existing processes, which are often manual and lack critical information. Organizations, in particular, face challenges in establishing what data exists, who owns the data, and how the data is being used.

These challenges lead to a gap between information technology (IT) and the business. IT is often tasked with data governance objectives to reduce risk, reduce cost, improve efficiency, and achieve compliance, but it lacks the business context around the data. The business owners understand the value of the data but need to be empowered with the right information to make data governance decisions.

### THE SOLUTION

Symantec and NetApp have jointly developed a solution using Symantec Data Insight and FlexPod to help organizations improve data governance. Data Insight integrates with NetApp® FAS storage systems to discover and collect activity and permissions information. It provides a web-based interface to monitor and report on users' access to data. Data Insight is also integrated into Symantec Data Loss Prevention suite, enabling organizations to discover, monitor, and protect their confidential information residing in CIFS and NFS file shares on NetApp storage systems that are an integrated component of FlexPod. Symantec has qualified Data Insight on the Cisco UCS, Nexus and NetApp Platform with NetApp clustered Data ONTAP in a FlexPod design. It has been qualified in a virtual machine environment using VMware's ESX solution. All components of Data Insight can work on either bare metal or virtual configurations.

### KEY HIGHLIGHTS

- Data ownership automation to improve data governance
- Detailed access history and alerts on irregular activity
- Visibility into effective permissions and exposed data
- Data lifecycle management and chargeback reports
- Integration with Symantec™ Data Loss Prevention to discover, monitor, and protect sensitive data

<sup>1</sup> IDC, 2009.

## FlexPod

FlexPod is the converged infrastructure solution from NetApp and Cisco. FlexPod accelerates the transformation from infrastructure silos to a virtualized, shared environment with validated, standardized, scalable building blocks that create a next-generation data center platform. FlexPod includes Cisco Unified Computing System™ (Cisco UCS®) server systems, Cisco Nexus® series switches, and NetApp® FAS and E-Series storage, along with clustered Data ONTAP®. FlexPod leads the converged infrastructure market through its unique combination of IT efficiency and architectural flexibility. FlexPod has traditionally been a way for IT to cut cost, but through solutions with partners like Symantec, it has become a platform for cutting-edge capabilities.



Figure 1) The FlexPod Datacenter display cabinet

## Data Ownership Identification

Data Insight helps organizations solve the problem of identifying data owners leveraging usage patterns and heuristics. Data Insight automates the discovery and management of custodians for unstructured data, enabling IT to empower the business owners to deliver on the organization's data governance objectives spanning risk, compliance, and efficiency.

## Data Protection and Compliance

Data Insight provides an intuitive web-based interface and reporting for security investigations and audits into who is accessing data, how often, and what else they have seen. Proactive monitoring capabilities can detect suspicious or irregular access of sensitive data and send alerts.

The solution readily finds shares or folders that are exposed due to overly permissive access. With this information, organizations can prioritize risk-reduction efforts such as the discovery of sensitive data or review effective permissions to align access to business need.

Data Insight is uniquely integrated with Symantec Data Loss Prevention. From a single interface, quickly discover confidential data, identify data owners, and engage them with a detailed understanding of access permissions and access history to enable an effective data protection process.

The integrated solution also helps achieve compliance for regulations covering personally identifiable information (PII) such as PCI and HIPAA. It ships with out-of-the-box policies that discover data covered by regulatory compliance. The data ownership and permissions reporting capabilities aid organizations in automating a large-scale process for custodians to review access to their data: a requirement for regulatory compliance.

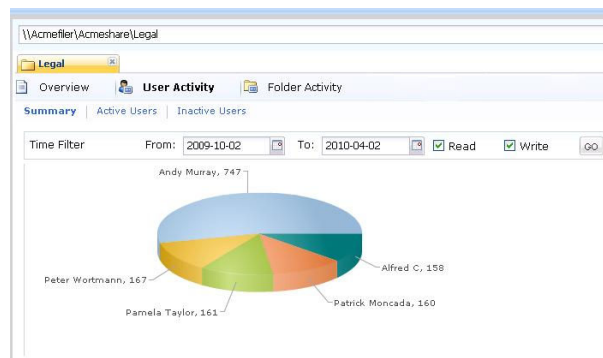


Figure 2) Data Insight View: Top Users of Data

## Data Management

Data Insight quickly locates inactive or orphaned data. Along with the ability to identify data owners, this capability enables effective data lifecycle management. The solution also helps classify data based on owners and groups or roles, which is often required to adhere to data retention guidelines.

Data Insight maps data owners to departments or business units for business-level consumption or chargeback reporting to promote storage efficiency.

The solution's visualization and reporting of usage analytics, such as how quickly data is growing, how old the data is, what data is frequently being used, and who is accessing the data, are vital for large-scale data management operations, such as migration, tiering, and capacity planning.

## How the Data Insight Solution Works

Symantec Data Insight connects to NetApp storage systems using NetApp Data ONTAP® interfaces for ease of configuration and management. The solution performs nonintrusive collection of activity events using NetApp FPolicy. It also collects permissions and metadata using efficient incremental scan techniques. Smaller installations require minimal hardware and setup time. For larger installations, the solution can scale out while economizing the hardware required. Clustered Data ONTAP 8.2+ is supported from Symantec Data Insight 4.5+, and Data ONTAP 7.3+ (7-Mode) is supported for all Symantec Data Insight versions. The Data Insight Platform has also been qualified to run on x86 based systems including Cisco UCS.

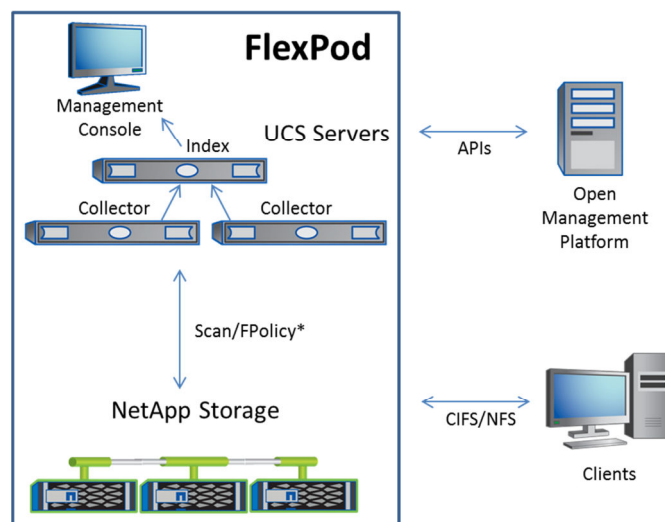


Figure 3) Data Insight architecture

## **Data Insight Solution on FlexPod**

The FlexPod reference architecture encapsulates the collection of server, networking and storage elements used in this solution. As a FlexPod, this Data Insight solution gets the benefits of rapid deployment, simplified architecture, increased availability and if needed, streamlined Cooperative Support for the platform elements.

### **ABOUT SYMANTEC**

Symantec helps organizations secure and manage their information-driven world. Our software and services protect against more risks at more points, more completely and efficiently, enabling confidence wherever information is used or stored. Learn more at [www.symantec.com](http://www.symantec.com).

### **ABOUT NETAPP**

NetApp creates innovative storage and data management solutions that deliver outstanding cost efficiency and accelerate business breakthroughs. Discover our passion for helping companies around the world go further, faster at [www.netapp.com](http://www.netapp.com).

### **ABOUT FLEXPOD**

FlexPod® is the leading converged infrastructure solution from NetApp and Cisco, that combines NetApp® storage systems, Cisco® Unified Computing System servers, and Cisco Nexus fabric into a single, flexible architecture. FlexPod solutions reduce deployment time, project risk, and the cost of IT. Learn more at [www.netapp.com/FlexPod](http://www.netapp.com/FlexPod).